

# MANITOBANS' VIEWS ON COVID-19: TAXES AND TRANSFERS

MAY 2020

**PROBE** RESEARCH INC.

FOR MORE  
INFORMATION:

**Curtis Brown**  
Principal

**PROBE RESEARCH INC.**

603 – 191 Lombard Ave.  
Winnipeg, MB R3B 0X1  
(204) 894-3298  
curtis@probe-research.com

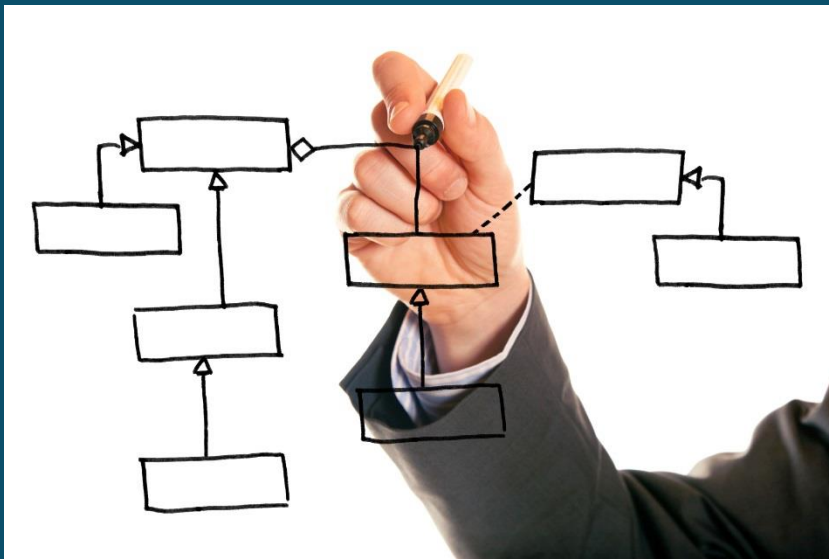
[www.probe-research.com](http://www.probe-research.com)



## KEY FINDINGS

- As Manitoba and other provinces begin to re-open their economies following the COVID-19 pandemic, a new Probe Research survey finds that citizens want governments to cover their additional spending by getting more taxes from higher-income earners and larger companies.
- More than eight-in-ten Manitobans (82%) support increasing tax rates for large corporations, with three-quarters (75%) backing an increase in income tax rates for high-income earners. Four-in-ten (41%), meanwhile, are in favour of increasing sales taxes, while fewer than one-in-five feel that small businesses should pay tax at a higher rate.
- Although supporters of Manitoba's Progressive Conservative government tend to be more reluctant than NDP and Liberal supporters to increase taxes, a majority of PC supporters are in favour of increasing the amount of tax paid by large companies and wealthier Manitobans.
- Meanwhile, more than six-in-ten Manitobans (62%) also support having a universal basic income (UBI) provided to citizens. Support for a universal basic income is fairly consistent throughout Manitoba, with younger adults, lower-income households and Indigenous citizens most likely to be in favour of it. Those who support the provincial Progressive Conservative government are less enthusiastic about this idea, while roughly eight-in-ten Manitoba NDP and provincial Liberal supporters are in favour of providing citizens with UBI.

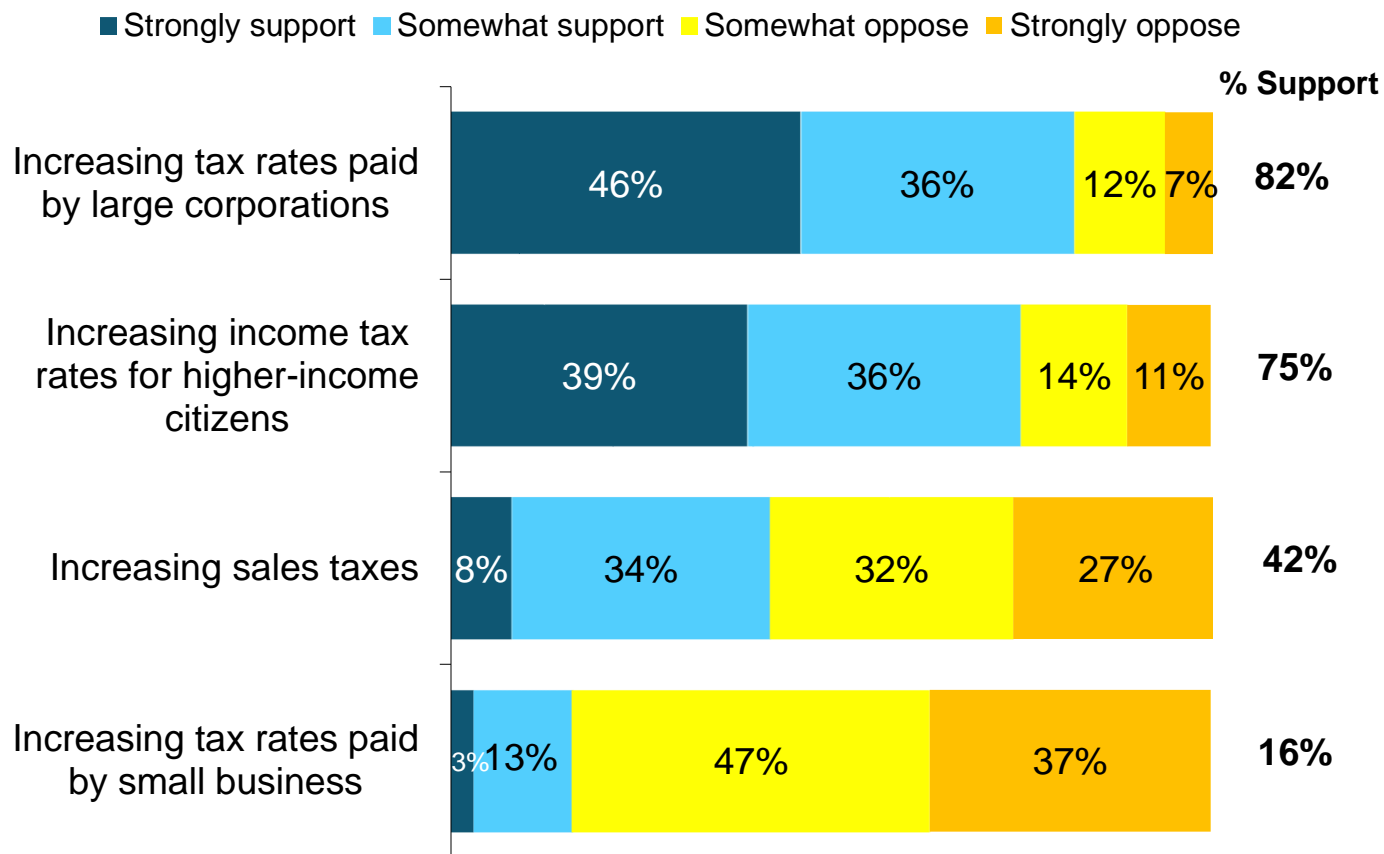
# METHODOLOGY



- Probe Research conducted a survey of Manitoba adults regarding their experiences with and perspectives on the COVID-19 virus.
- Probe Research surveyed a total of N=803 Manitoba adults online between April 24th and 28th, 2020.
- Respondents were recruited from Probe Research's proprietary panel and supplemented with those from a national online panel provider.
- As an online survey is a sample of convenience, no margin-of-error can be ascribed. However, a random and representative non-convenience sample of 803 adults would have a margin of error of  $\pm 3.46$  percentage points, 19 times out of 20.
- Minor statistical weighting by age, gender and region has been applied to this sample to ensure that it corresponds with the province as a whole.

# MANITOBANS SUPPORT HIGHER TAXES FOR LARGE COMPANIES, WEALTHIER INDIVIDUALS

Q23. "During the pandemic, governments are spending more money to help people and businesses. To what extent do you support or oppose governments taking the following steps after the pandemic is over?"



Notable variations include:

- Women are more likely than men to support increasing tax rates for large companies (88% vs. 75% respectively).
- Those with lower household incomes are more likely to support increasing income taxes for higher-income earners (82% among those earning <\$50K vs. 68% among those earning \$100K+).
- Younger adults aged 18-34 are more likely to be in favour of increasing the small business tax rate (24% vs. 14% among those 55+).
- Public sector workers are more likely than their private sector counterparts to support increasing sales taxes (50% vs. 35%) and increasing the tax rates for large companies (89% vs. 74%).

Base: All respondents (N=803)

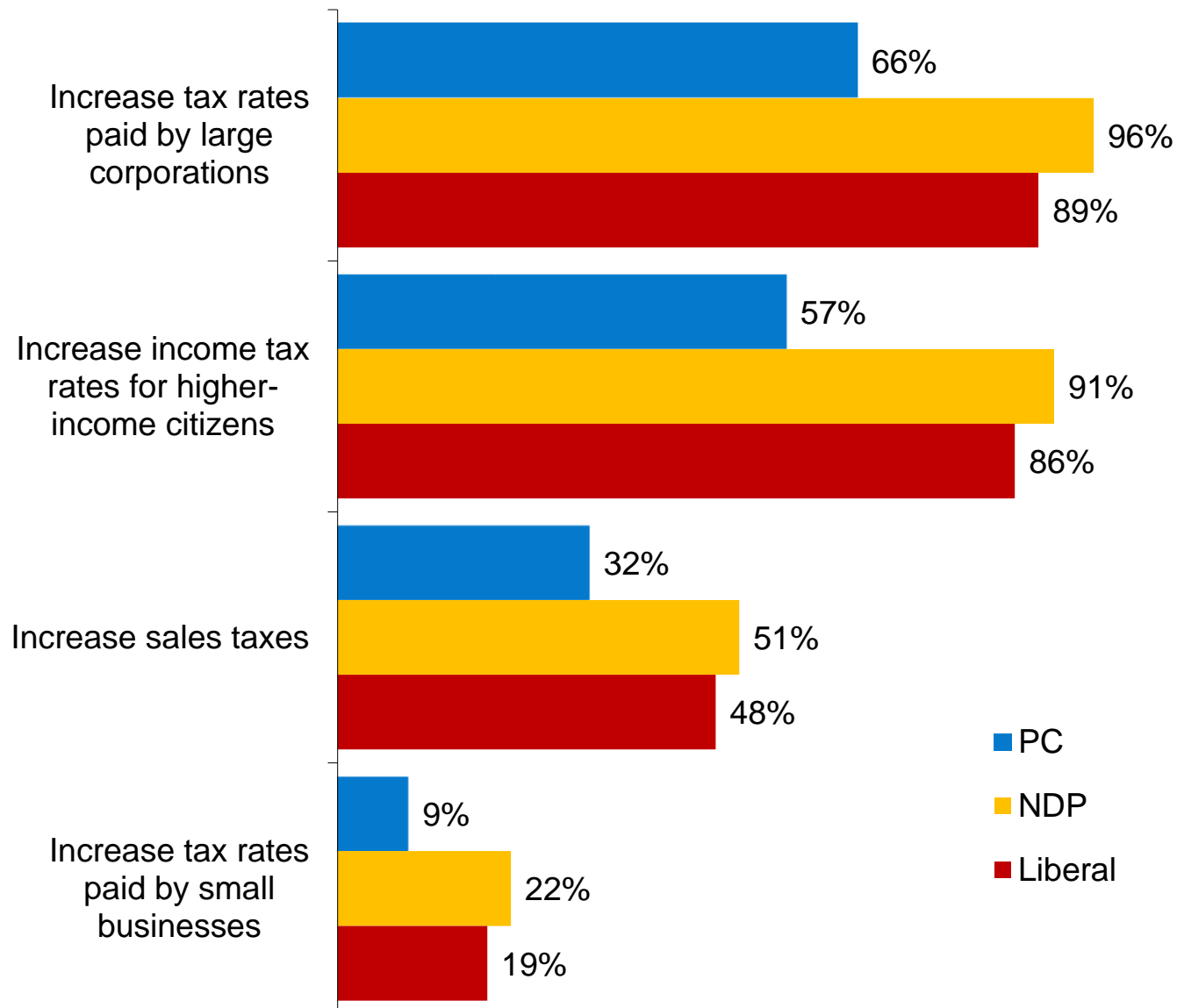
# NDP, LIBERAL SUPPORTERS ARE MORE LIKELY THAN PC VOTERS TO BACK TAX INCREASE MEASURES

## BY PROVINCIAL PARTY PREFERENCE

Q23. "During the pandemic, governments are spending more money to help people and businesses. To what extent do you support or oppose governments taking the following steps after the pandemic is over?"

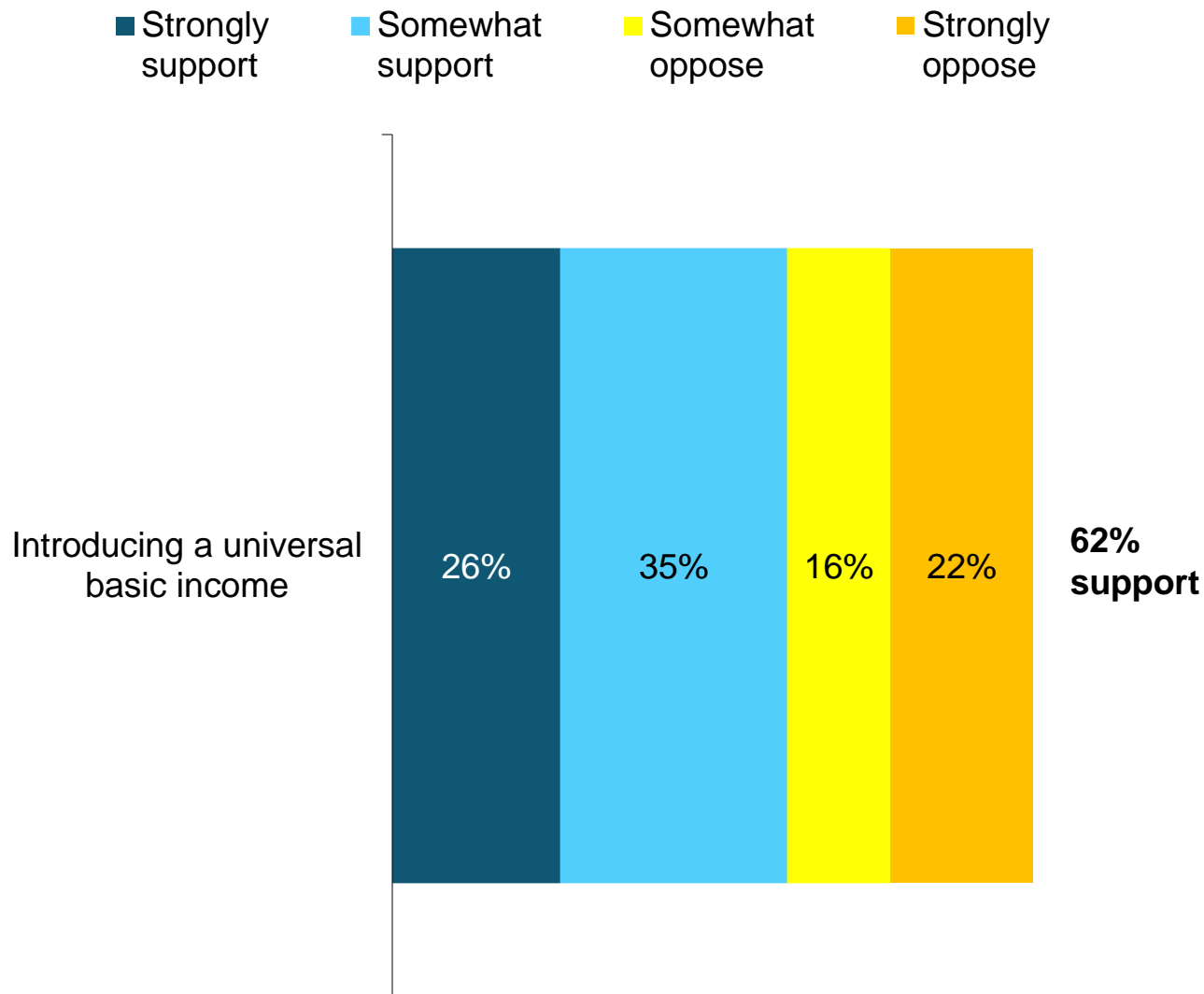
Base: All respondents (N=803)

% who strongly or somewhat support



# MORE THAN SIX-IN-TEN MANITOBBANS SUPPORT UNIVERSAL BASIC INCOME (UBI)

Q23. "During the pandemic, governments are spending more money to help people and businesses. To what extent do you support or oppose governments taking the following steps after the pandemic is over?"



Base: All respondents (N=803)

# YOUNGER ADULTS, LOWER-INCOME MANITOBIANS MORE LIKELY TO SUPPORT UBI

## VIEWS AMONG SUB-GROUPS

Q23. "During the pandemic, governments are spending more money to help people and businesses. To what extent do you support or oppose governments taking the following steps after the pandemic is over?"

Base: All respondents (N=803)

% who strongly or somewhat support

